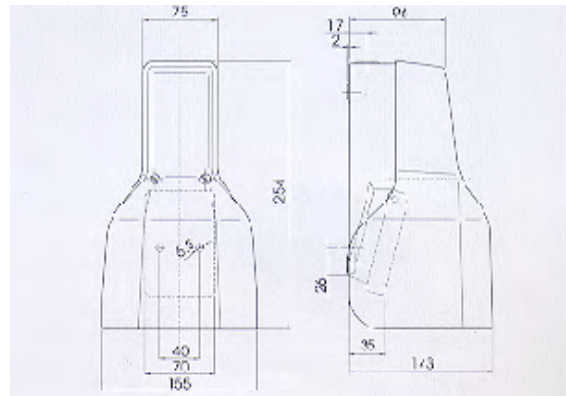
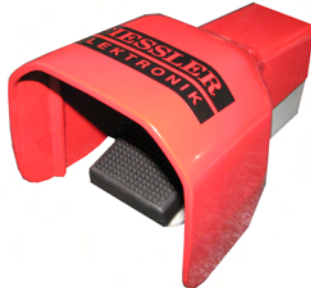


Safety foot pedal FL1-528-ZSD4-U



The safety foot pedal FL1-528-ZSD4-U has 3 positions, with a hard point, to control dangerous movements (for instance the closing movement of a press brake etc...). It has 4 working contacts (2NC+2NO) to drive the movement and a block of 2 safety switches (1 positively driven NC contact + 1NO) to stop the movement. Pressing on the right foot actuator, till the hard point, allows the changeover of the 4 working contacts. Once the hard point is passed, the 4 working contacts return to their first position and the 2 contacts block is activated in order to stop immediately the dangerous movement. Then it would be possible to drive one more time the movement after the foot actuator is completely released. This function allows to stop immediately the machine even if the operator is carried along in front by the dangerous movement.

Technical Data

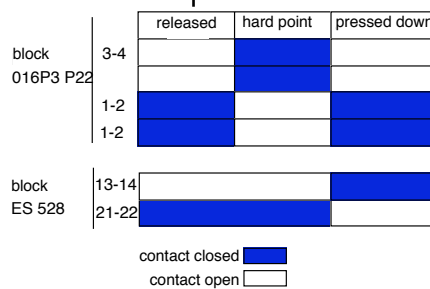
Mechanical data

Housing:	Die cast aluminium AL Si 12 – paint colour grey like RAL 7001
Cover/protective hood:	Die cast Aluminium AL Si 12 - paint colour red like RAL 3000
Foot actuator:	Reinforced thermoplastic PA 6.6 – black
Service temperature:	-30°C à +70°C
Mechanical service life :	106 operations min
Cable entry :	PG13,5 (It is recommended to fix the cable with one cable gland)

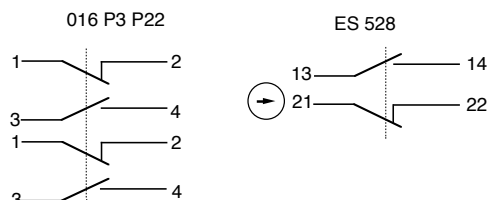
Electrical data

	Before hard point	After hard point
Contacts:	2 NO + 2 NC	1 NO + 1 positively driven NC
Switching element:	Snap-action switch	Slow-action switch
Connection type:	solder post	screw terminal
Operating voltage:	max. 250 V~	max. 250 V~
Switching current:	max. 5 A	220V/0,5A 24V/6A

Switching diagram

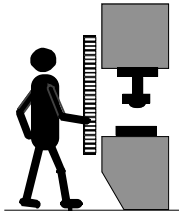


Wiring diagram

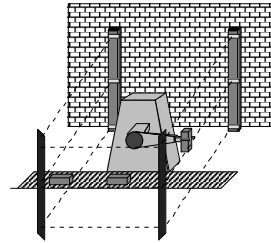


Delivery program

Fiessler Elektronik
 Kastellstr. 9 D-73734 Esslingen
 Telefon: 0711 / 91 96 97-0
 Telefax: 0711 / 91 96 97-50
 WWW.fiessler.de
 E-Mail: info@fiessler.de



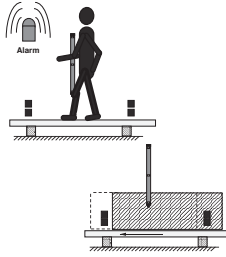
Safety light curtain



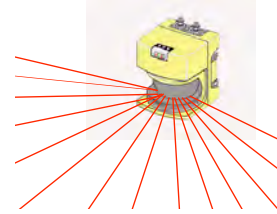
Safety light grid



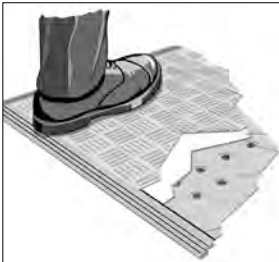
Single safety light beam



Safety light grid with muting function

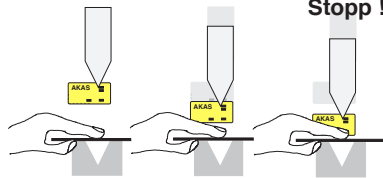


Proximity scanner



Safety mats

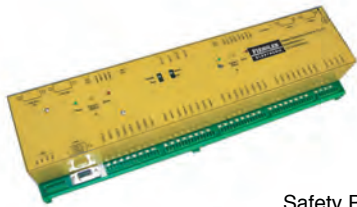
AKAS®



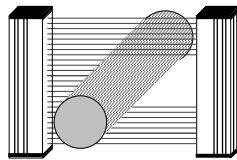
Press brake safety system



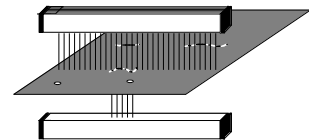
Safety foot pedal



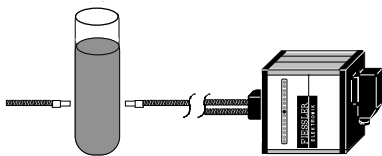
Safety PLC
 Safety controllers



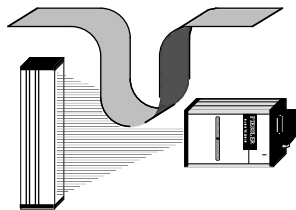
Measuring and controlling light curtains



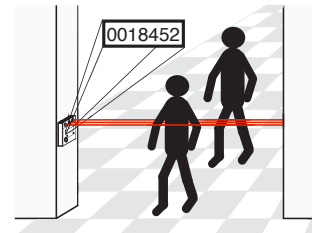
Hole detectors



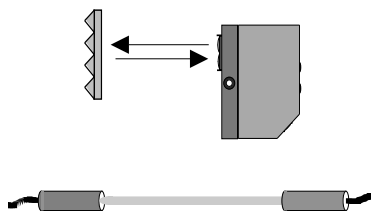
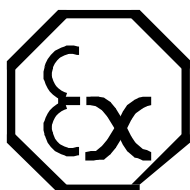
Turbidity sensors



Analogue loop sensors



Counting light barriers



Light barriers for general purposes



Your application