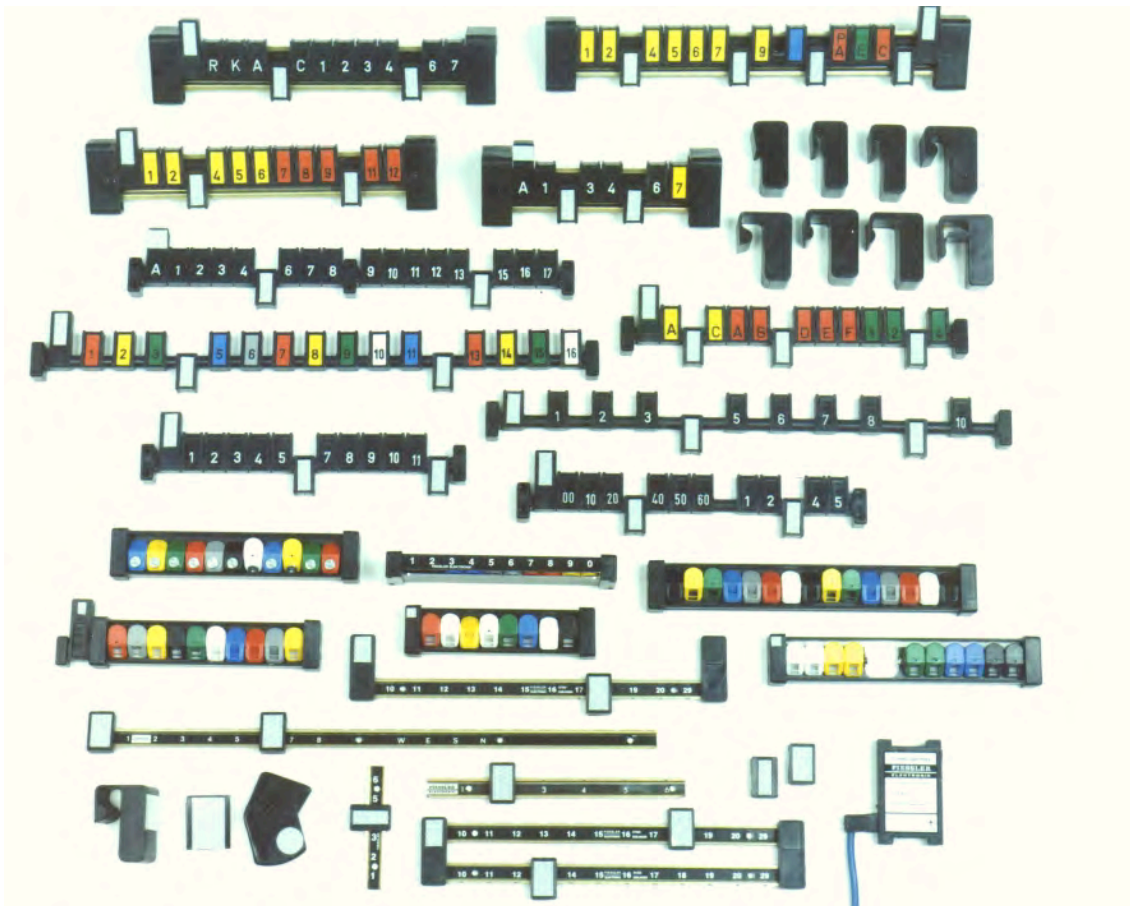


### Coding strips



**Variable modular system**

**Available as folding, tilting, or sliding strips**

**Coding of flow programmes**

**Various mounting options**

**Visually readable coding**



DIN EN ISO 9001  
Reg.Nr. 96007



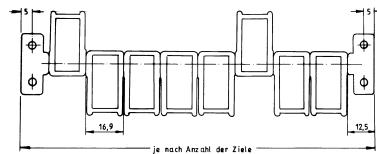
**Application:**

Coding strips are used for the steering control by transport containers in tape conveyor plants. Each coding strip consists of a fixed label and an arbitrary number of reflecting variable marks. The targets can be defined by folding, tilting, or sliding of the marks. Two light barriers are located at the stations of the conveyor belt the container is due to stop. These light barriers are mounted in the distance of the target and the fixed mark. As soon as the target and the fixed mark of the coding strip match with the light barriers of the station, the containers will be read out and moved out.



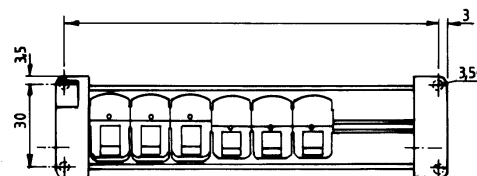
**Folding coding strips:**

The folding coding strips feature reflecting flaps which are arranged side by side or one above the other. The flaps carry the target number on one side and on the other side the reflectors. The reflectors can be switched on and off by flipping over. A resting holds the flaps in the desired position. This strip is characterized is easy to read and enables a simple setting of the desired targets. A large variety of mounting elements facilitates the mounting at most different containers.



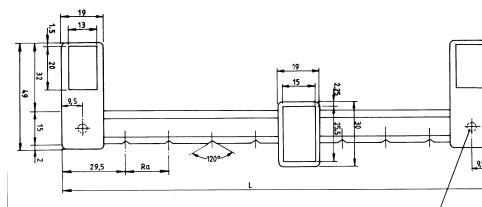
**Tilting coding strips:**

In order to enable to trigger as many as possible targets with only one strip and in order to enable an automatic actuating of the coding cams, this tilting strip was developed. Switching on and off is done via tilting of the cams by 45 degrees. By the small tilting angle it is possible to execute a setting of the targets using a manually controlled coding machine, a code pen or directly by a computer. By this, additional rationalization effects result.



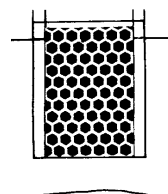
**Sliding strips :**

In conveyor plants, with only a few stations are used, a sliding coding strip is frequently used. For each target, the container must be coded anew. Since these strips are provided with large reflectors, they are suitable also for less exact path guides and rough environments.



**Single coding:**

If only individual boxes have to be indicated, single reflectors can be added on the boxes. For this purpose, plastic holders for slip-on fastening are available.



**Reflex light barriers:**

For the safe reading of the coding strips, there are special light barriers available, see P 7